

# Continuous Production Range - Options

- Acceleration conveyors
- Short block weighing
- Block Printing
- Foam Block Marbelisation
- Block Height Indication
- Short block diverter conveyor (pop – up conveyors)
- Custom machine design and manufacture
- Powder handling systems for fillers
- Tank farm design / equipment / turnkey

# Continuous Production Range – Maxfoam / Elite

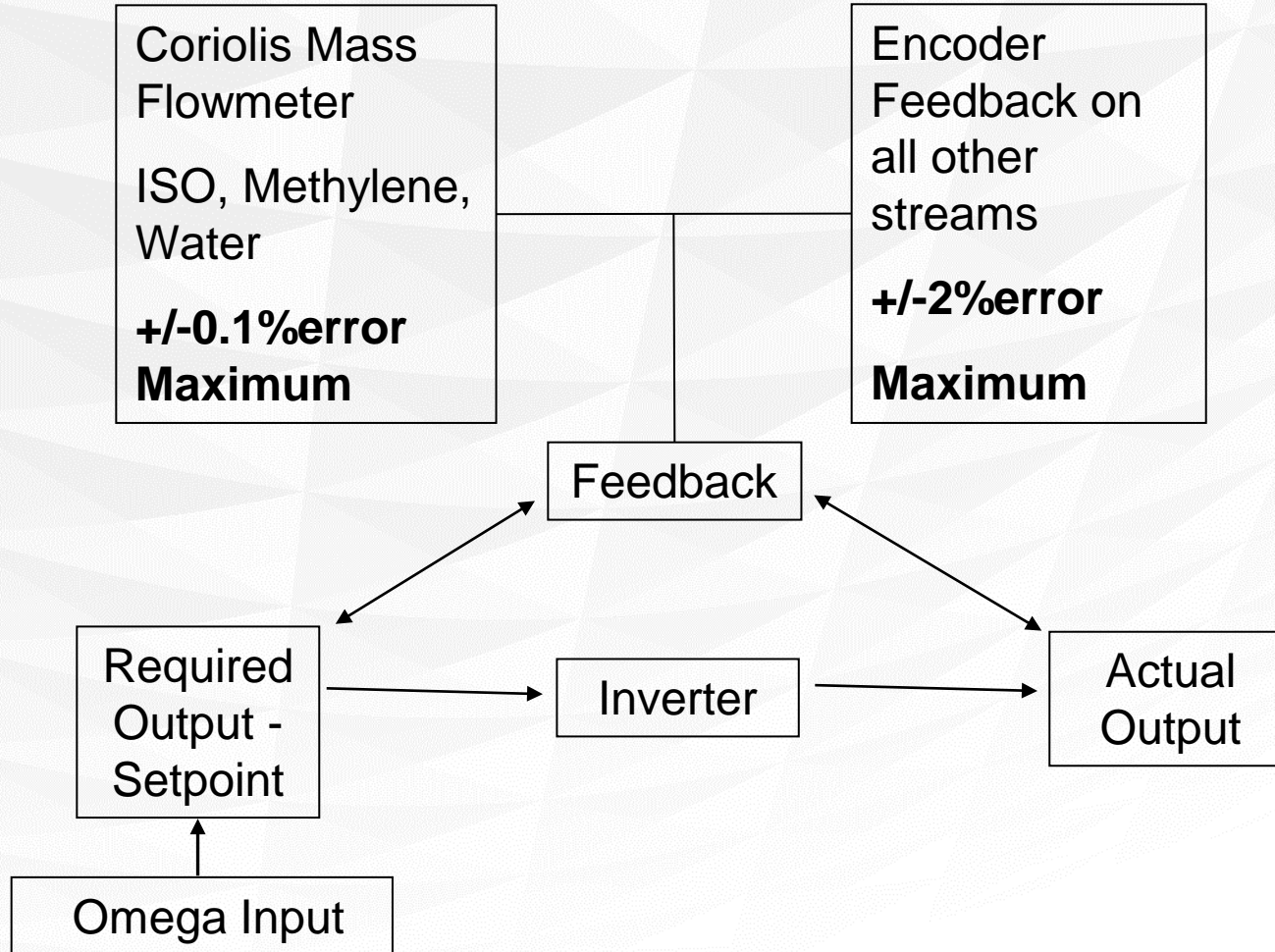
## CANNON VIKING FEATURES & ADVANTAGES:- MASS FLOW METERS

- ALL equipment comes with **closed loop control** through the Omega Control System
- Accuracy of chemical metering typically **to +/-0.1%** or better when using mass flowmeter feedback. +/-2% or better when using encoder feedback
- Mass flowmeters **as standard** on ISO, Blowing Agents and Water
- Standard flowmeters E+H and Siemens



# Continuous Production Range – Maxfoam / Elite

## CANNON VIKING FEATURES & ADVANTAGES:- OMEGA CLOSED LOOP CONTROLS

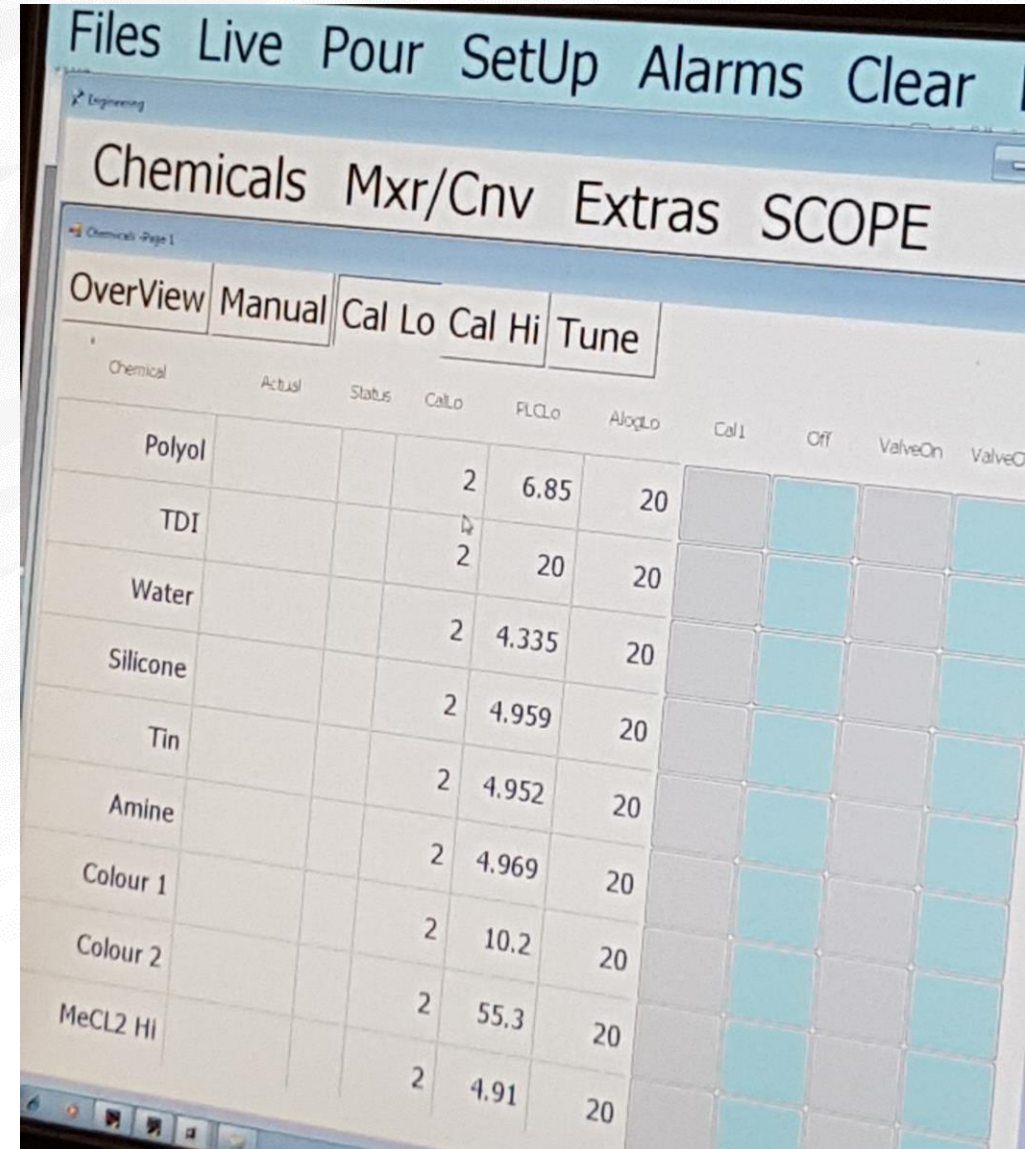


- Continuous monitoring and adjustment
- Adjusts the output to match the set point required
- Alarms if the set point is not achieved
- Performs a controlled shutdown if there is a potential chemical unbalance to prevent high exothermic reactions
- Saves money vs open loop systems
  - Close chemical consumption control
  - Repeatability of foam grade production
  - Moves a large amount responsibility from the operate

# Continuous Production Range – Maxfoam / Elite

## CANNON VIKING FEATURES & ADVANTAGES:- OMEGA CLOSED LOOP CONTROLS

- Formulation stored with all running parameters
  - Chemical flow rates with the ability to store a number of individual chemicals / brands per metering stream
  - Conveyor speed
  - Profile equipment
  - Mixer speed
  - Sidewall width
  - **The easiest system on the market to upgrade to date due to Plug and Play type technology**



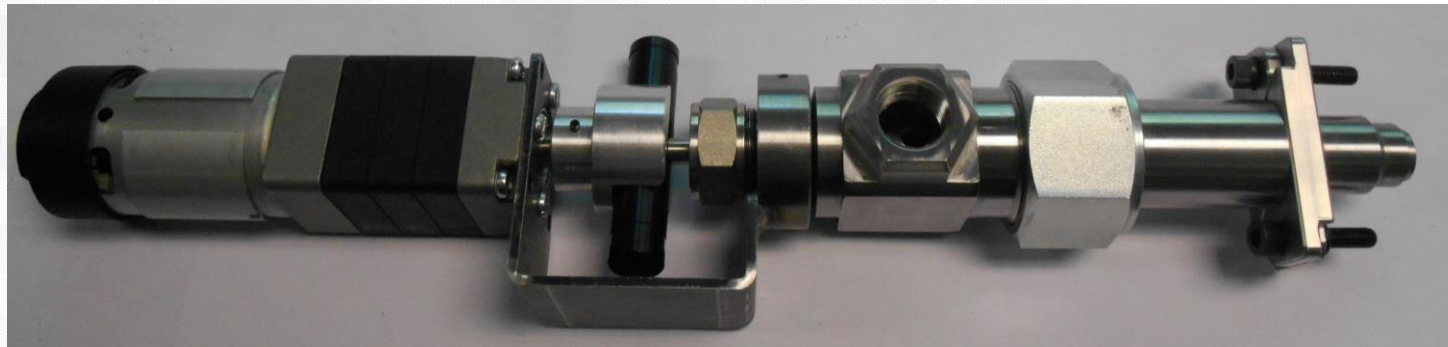
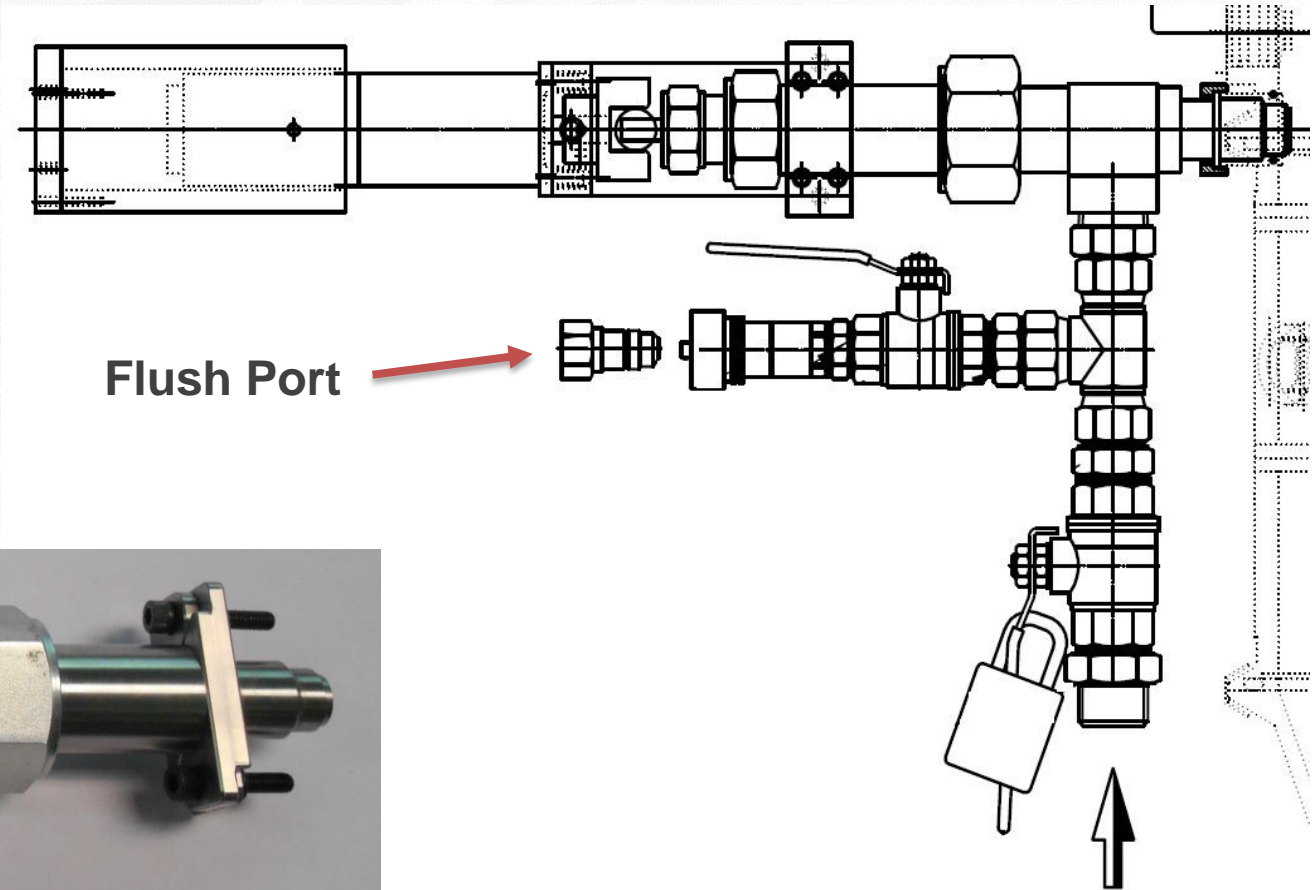
The screenshot displays the Cannon Viking control interface. At the top, there are menu options: Files, Live, Pour, SetUp, Alarms, and Clear. Below this, the main title is 'Chemicals Mxr/Cnv Extras SCOPE'. The interface is divided into several tabs: OverView, Manual, Cal Lo, Cal Hi, and Tune. The 'Manual' tab is currently selected. The main display area shows a table with columns for Chemical, Actual, Status, CalLo, FLCLo, AlqLo, Cal1, Off, ValveOn, and ValveO. The table lists various chemicals and their corresponding parameters.

Chemical	Actual	Status	CalLo	FLCLo	AlqLo	Cal1	Off	ValveOn	ValveO
Polyol			2	6.85	20				
TDI			2	20	20				
Water			2	4.335	20				
Silicone			2	4.959	20				
Tin			2	4.952	20				
Amine			2	4.969	20				
Colour 1			2	10.2	20				
Colour 2			2	55.3	20				
MeCL2 HI			2	4.91	20				

# Continuous Production Range – Maxfoam / Elite

## CANNON VIKING FEATURES & ADVANTAGES:- HIGH PRESSURE TECHNOLOGY

- **Cannon Injectors** are used on both High Pressure ISO and Water streams for customers upgrading to Partial / Full High Pressure option.
- These are typically run at 60 Bar.
- The injection pintle opens outwards creating a **coned shape spray**, which helps dispersion.



Motorised ISO Injector

# Continuous Production Range – Maxfoam / Elite

## CANNON VIKING FEATURES & ADVANTAGES:-

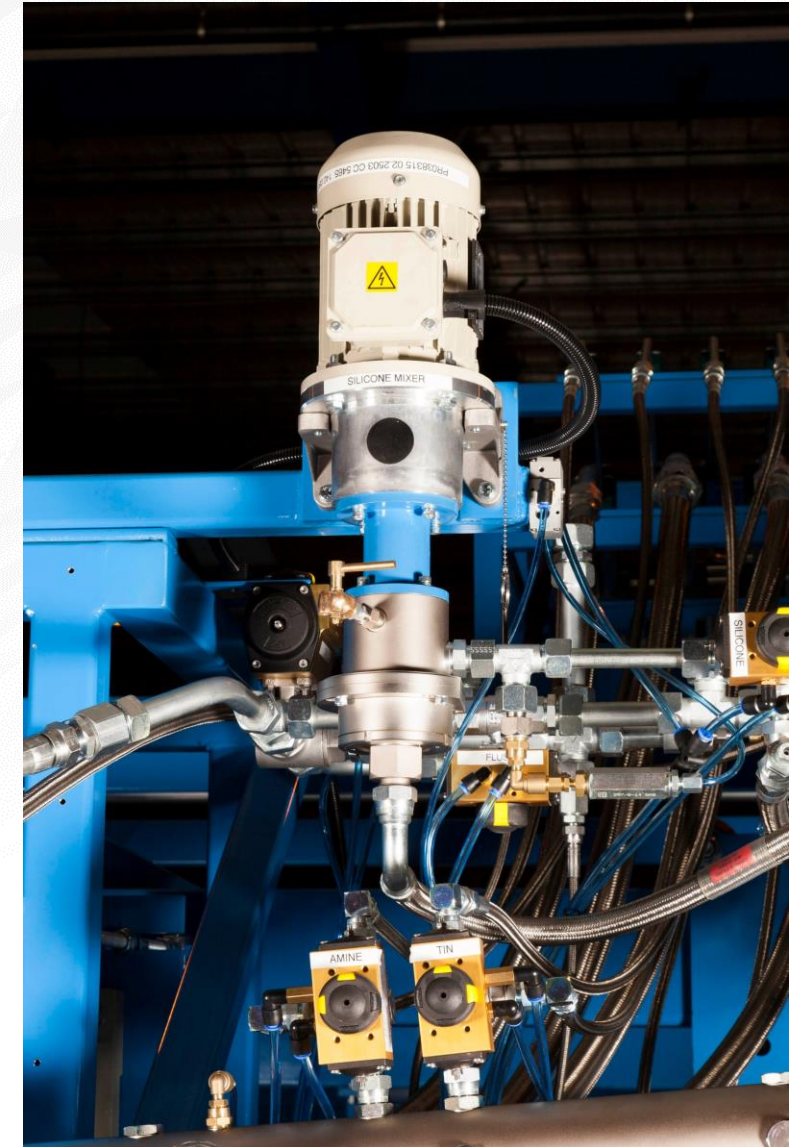
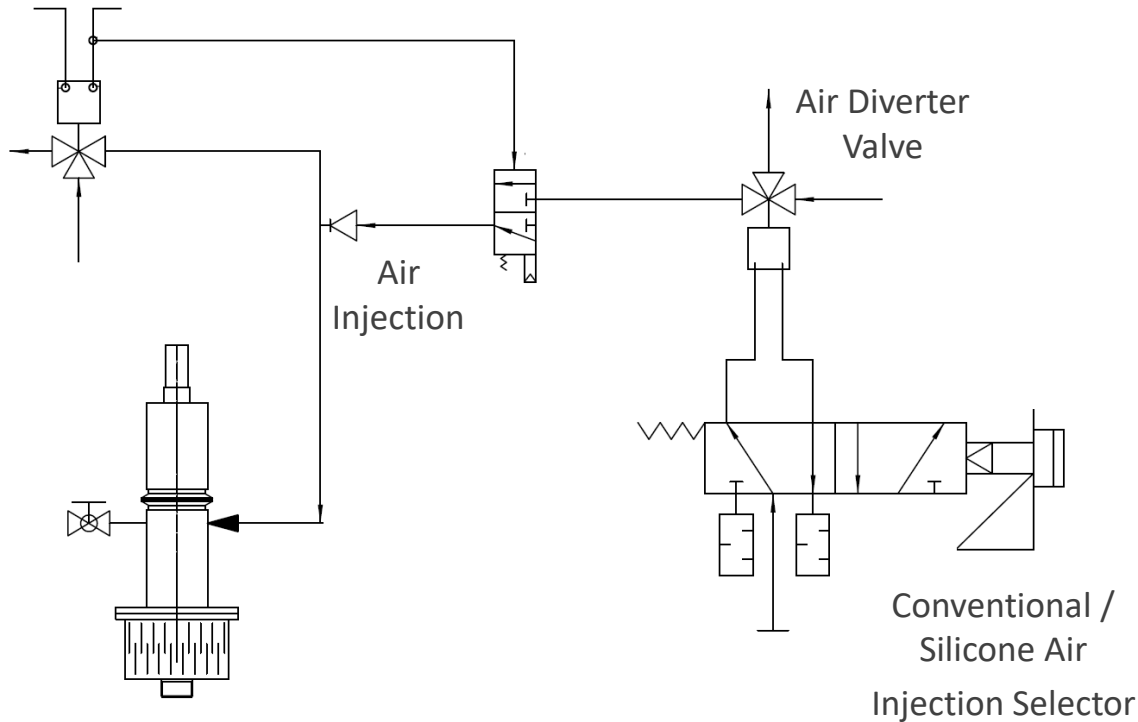
- Bespoke machine design based on more than 50+ year of manufacturing experience
- Long-lasting and Robust machine design using **high quality materials and parts**
- All chemical metering units designed specifically to suit the chemical properties to be handled
- **Modular design** which can be easily upgradable thanks to the controls design.
- Beckoff controls means **long term support** as well as allowing for backward integration.

# Continuous Production Range - Options

## Silicone Air Mixer

- Major reduction seen in the quantity and size of pinholes

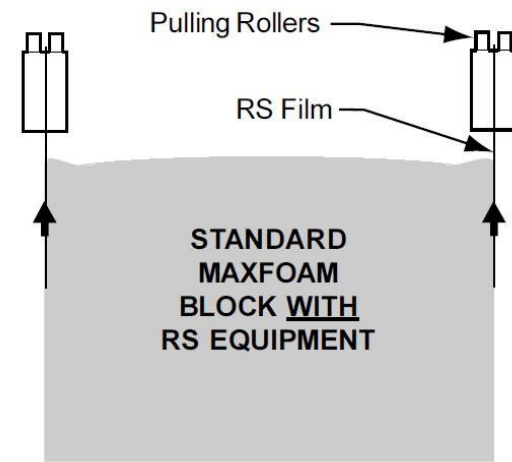
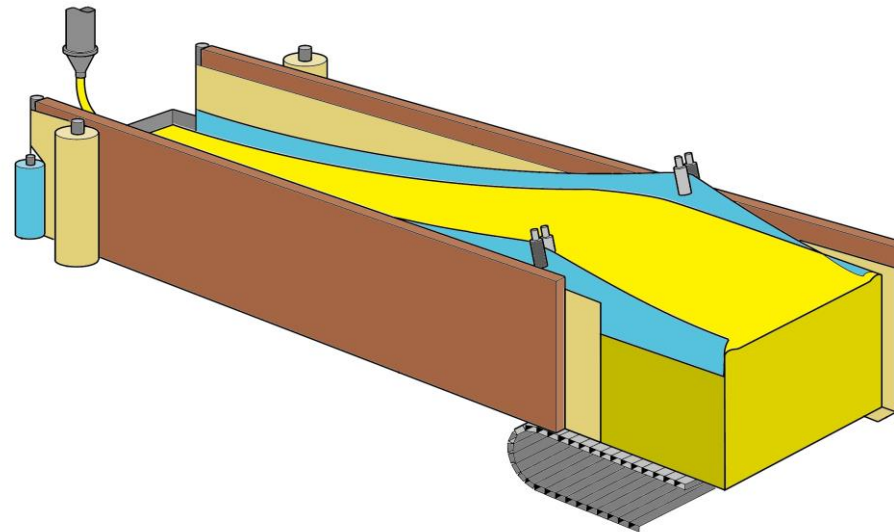
Silicone  
Recirculation  
Valve



# Continuous Production Range - Options

## Flat top Equipment RS

- Improvement on foam block profile
- Can have a yield improvement between **1 – 2%**

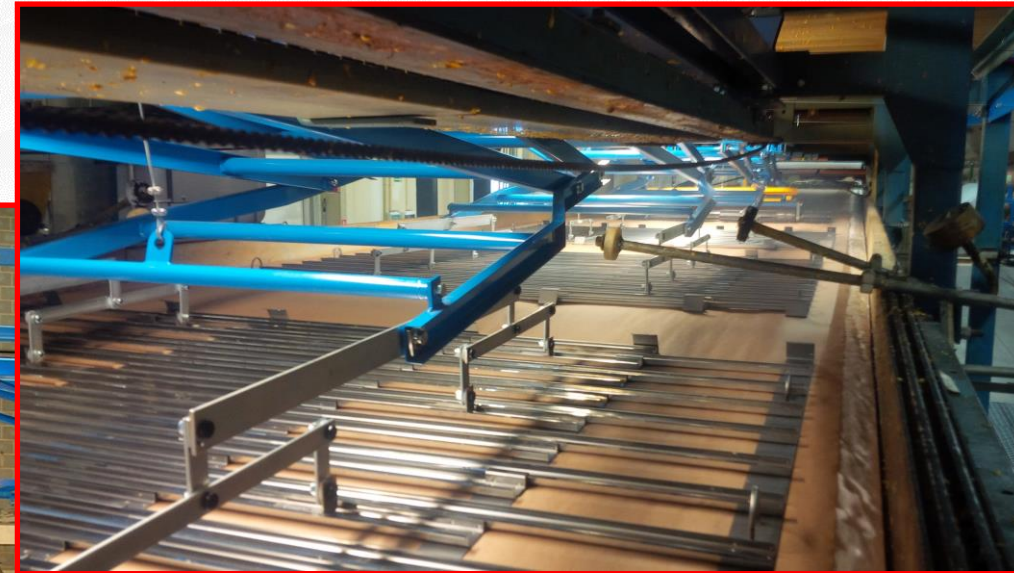




# Continuous Production Range - Options

## Flat top Equipment Planiblock

- Improvement on foam block profile
- Reduction in top skin on foam block
- Can have a yield improvement between **3 – 4%**



# Continuous Production Range – Options

## Conveyorised Sidewalls

- Heavy duty conveyorised sidewalls
- Sidewalls can be driven in width and also have an option for width adjustment whilst foaming (**VariMax**)
- Sidewalls can be adjusted in angle for HR foam production
- Improves foam side block profile leading to foam yield improvement upto **1%**



# Continuous Production Range - Options

## Paper Trimmers

- Manual Width
- Auto Width
- All With Rewinds



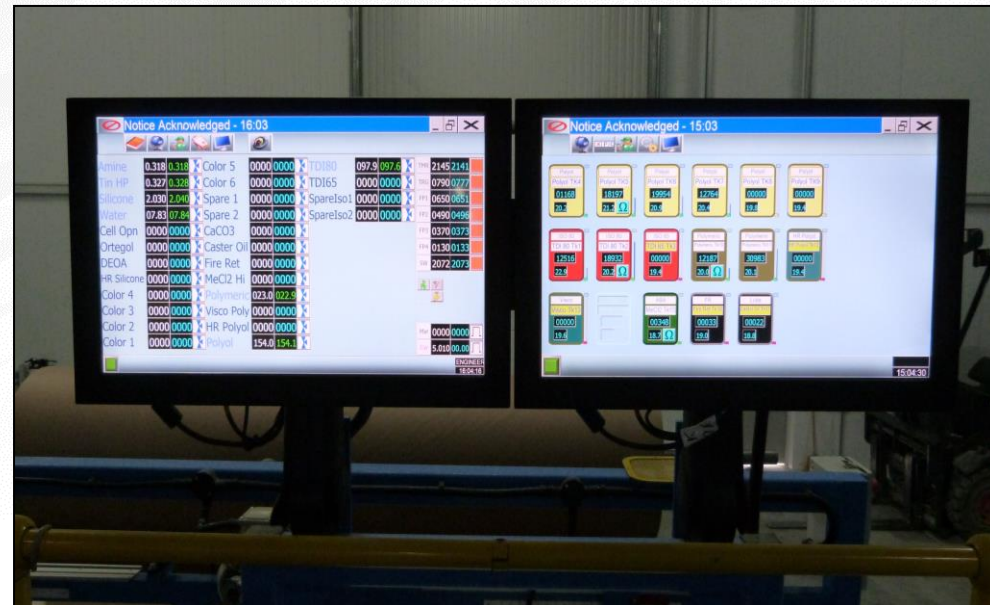
# Continuous Production Range - Options

## VCO

- Standard VCO
- Visco VCO



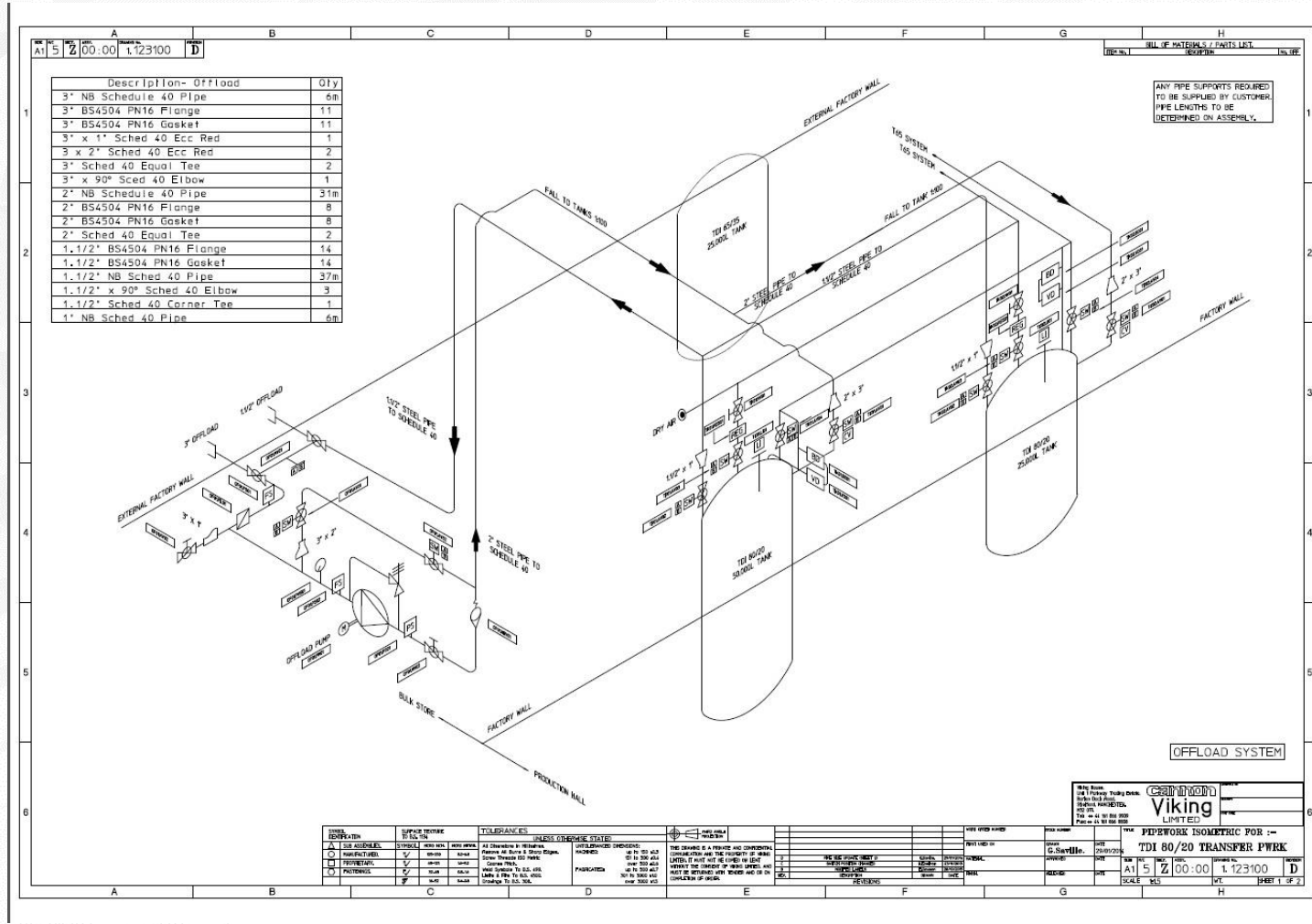
# Tank Farm – Design and Supply



# Tank Farm – Design Only

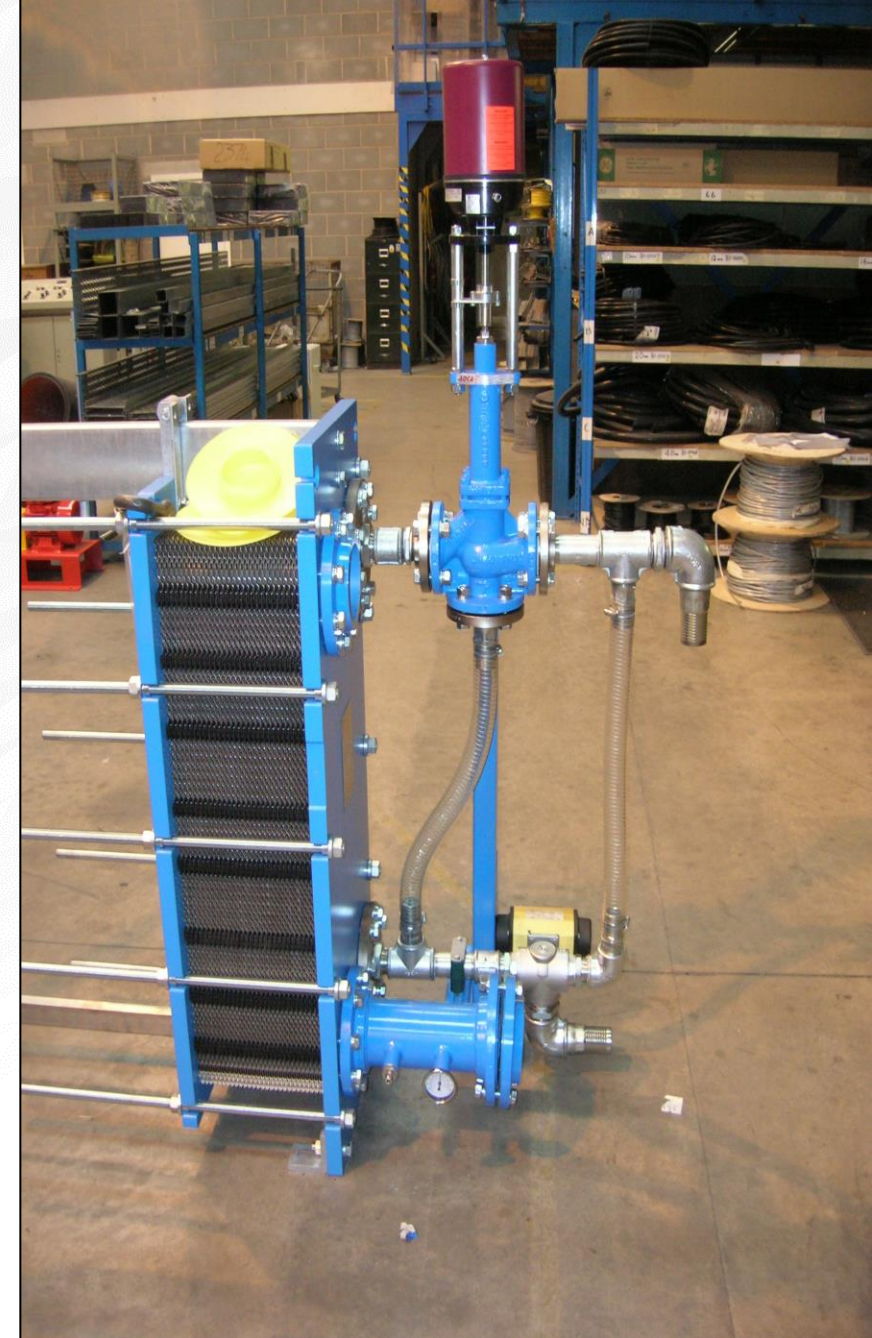
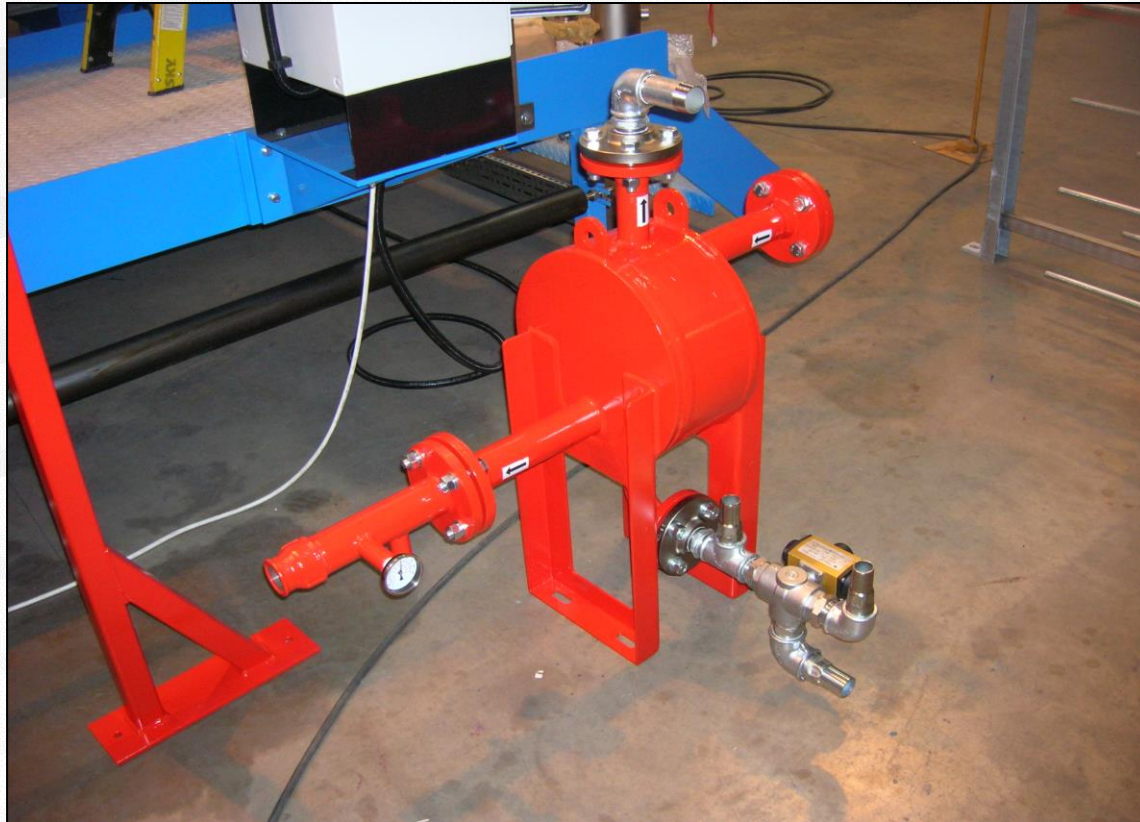
## Tank Design includes:

- Flow Sheet
- P+IDs
- Specify major equipment
- Parts lists
- Isometric drawings



# Tank Farm – Design & Supply

As per design only except all major equipment and instrumentation is purchased from Cannon Viking



# Tank Farm – Full Supply

All design, equipment and supervisory installation by Cannon Viking.

